

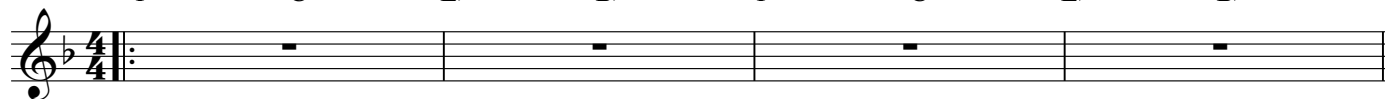
V'ahavta

Music - Daniel and Josh Warshawsky

Text Source: Vayikra 19:18, Pirkei Avot 1:14, and Devarim 6:5 (Shema)

♩=100

Capo 3: D A C G D A C G
F C Eb Bb F C Eb Bb



PART 1

5 D A C G D A C G
F C Eb Bb F C Eb Bb



9 D A C G D A C G
F C Eb Bb F C Eb Bb



PART 2

13 D A C G D A C G
F C Eb Bb F C Eb Bb



17 D A C G D A C G
F C Eb Bb F C Eb Bb



PART 3

D A C G D A
F C Eb Bb F C



24

B'chol le-vav - cha_ v'-naf - she - cha_

hav - ta_ B'chol le-vav - cha_ v'-naf - she - cha_ me-o - de

Chords: C Eb, G Bb, D F, A C, C Eb, G Bb

27

me - o - de - cha_ ah_

- cha_ v' - a - hav - ta_

Chords: D F, A C, C Eb, G Bb, G(add9) Bb(add9)

30

N.C. D A C G D A C G
N.C. F C Eb Bb F C Eb Bb

35

V' - a - hav - ta_ l'-rei' e - cha_ ka - mo - cha_

Chords: D F, A C, C Eb, G Bb, D F, A C, C Eb, G Bb

39

V' - a - hav - ta_ l'-rei' e - cha_ ka - mo - cha_

Chords: D F, A C, C Eb, G Bb, D F, A C, C Eb, G Bb

43

Im lo ach - shav_ ei - ma - tai? _____ im lo ach - shav ei - ma - tai? _____

D A C G D A C G
F C Eb Bb F C Eb Bb

V' - a - hav - ta _____ l' rei' e - cha _____ ka - mo - cha _____

47

Im lo ach - shav_ ei - ma - tai? _____ im lo ach - shav ei - ma - tai? _____

D A C G D A
F C Eb Bb F C

V' - a - hav - ta _____ l' - rei' e - cha _____ ka - mo -

50

B' chol le - vav - cha _____ v' - naf - she - cha _____ me - o - de - cha _____ v' - a -

_____ Im lo ach - shav_ ei - ma - tai? _____ im lo ach - shav ei - ma - tai? _____

C G D A C G D A
Eb Bb F C Eb Bb F C

- cha _____ V' - a - hav - ta _____ l' rei' e - cha _____ ka - mo -

54

-hav - ta B' - chol le - vav - cha v' - naf - she - cha me - o - de -

Im lo ach - shav ei - ma - tai?

C G D A C G
Eb Bb F C Eb Bb

- cha V' - a - hav - ta l' - rei' e - cha

57

- cha v' - a - hav - - - ta

im lo ach - shav ei - ma - tai?

D A C G
F C Eb Bb

ka - mo - - - cha B' - chol le - vav

59

B' - chol le - vav - cha v' - naf - she - cha me - o - de - cha

D A C G D A
F C Eb Bb F C

- cha v' - naf - she - cha me - o - de - cha v' - a -

62

B'chol le-vav - cha_ v'-naf - she - cha_

C Eb G Bb D F A C C Eb G Bb

hav - ta_ B'chol le-vav - cha_ v'-naf - she - cha_ me-o - de

65

me - o - de - cha_ ah

D F A C C Eb G Bb G(add9) Bb(add9)

- cha_ v' - a - hav - ta_